



What's Inside

2	MBCA Board & Contact Info
3	Editor's Page
4	2012 Gary Filbert Classic
5	"Storming...The Danger Zone"
9	Q & A With the Difference-Makers: John Schnell-Legendary Missouri Official & Sports Figure
11	Tribute to Steve Boeh
12	Coaches' Clipboard
14	The MBCA All-District/All-State Process...We Need Your Help!
18	Meat & Potatoes Section (nomination forms)
19	Mr & Miss Show-Me Basketball
20	All-State/All-District
21	Academic All-State
22	Richard Fairchild Coach of the Year
23	Hall of Fame
24	Kevin "Cub" Martin Assistant Coach of the Year
25	Curtis Kerr Student-Assistant of the Year
26	Membership Form

2011-2012 MBCA Board Regional Representatives & Officers

Region	Name	School	E-Mail
Central-Boys	Ryan Fick	Blair Oaks	rfick@blairoaks.k12.mo.us
Central Girls	Bobby Sangster	California	bobby.sangster@californiak12.org
Kansas City-Boys	Chris McCabe	Liberty North	cmccabe@liberty.k12.mo.us
Kansas City-Girls	Herb Webster	Kearney	hwebster@kc.rr.com
KC Basketball Coaches Association	Scott Jermain	Raymore-Peculiar	sjermain@raypec.k12.mo.us
Northeast-Boys	Matt Thomas	Palmyra	thomasm@palmyra.k12.mo.us
Northeast-Girls	Kristie Douglas	Moberly	kdouglas@moberly.k12.mo.us
Northwest-Boys	Tim Jermain	Jefferson	timjermain@jc123.k12.mo.us
Northwest-Girls	Brett Goodwin	St. Joseph Benton	brett.goodwin@sjsd.k12.mo.us
Private-Boys	Kevin Walsh	Vianney	kwalsh@vianney.com
Private-Girls	Julie Matheny	St. Joseph's	jmatheny@stjosephacademy.org
St. Louis-Boys	Josh Martin	Hazelwood Central	jmartin1@hazelwoodschoools.org
St. Louis-Girls	Jennifer Porter	Lafayette (Wildwood)	porterjennifer@rockwood.k12.mo.us
South Central-Boys	Bart Denbow	Osage	denbowb@osage.k12.mo.us
South Central-Girls	Brad Conway	St. James	bconway@stjsschools.org
Southeast-Boys	Darrin Scott	Jackson	dscott@Jackson.K12.mo.us
Southeast-Girls	Tyler Abernathy	Jackson	tabernathy02@yahoo.com
Southwest-Boys	Skip Brock	Mt. Vernon	skip_brock@hotmail.com
Southwest-Girls	Jeni Hopkins	Hillcrest	jhopkins@spsmail.org
Executive Director	David Fox	Jefferson City	david.fox@mbca.org
President	Neal Hook	St. Joseph Central	neal.hook@sjsd.k12.mo.us
President-Elect	Ryan Shaw	Potosi	rshaw@potosi.k12.mo.us
Vice-President	Bill Gunn	Kirkwood	kirkwoodbasketball@yahoo.com
Treasurer	Tonya Mirts	Hickman	Tmirts@columbia.k12.mo.us
Secretary	Jeni Hopkins	Hillcrest	jhopkins@spsmail.org
Past President	Jay Blossom	Webster Groves	blossom.jay@wgmail.org
College	Bob Burchard	Columbia	rburchard@ccis.edu
Junior College	Randy Albrecht	Meramec	ralbrecht@stlcc.edu
Missouri Challenge Tournament Committee	Denny Hunt	Drury	dvhunt30@yahoo.com
	Nick Kemerling	Savannah	kemerln@mail.savannah.k12.mo.us
	Jacky Payne	Skyline	jpayne@skyline.k12.mo.us
	John Schaefer	Hillcrest	jschaeffer22@hotmail.com
	Ryan Shaw	Potosi	rshaw@potosi.k12.mo.us
Associate Clinic Coordinators	Chris Neff	St. Joseph Lafayette	chris.neff@sjsd.k12.mo.us
	Dan Rolfes	Incarnate Word	drolfes@iwacademy.org
All-State/District/Academic Committee	Shawn Erickson	Festus	mbca.allstate@gmail.com
	Jim Vaughan	Kennett	jimvon9@hotmail.com
Webmaster	Bill Gunn	Kirkwood	kirkwoodbasketball@yahoo.com
Newsletter Editor	Shane Matzen	Marquette	matzenshane@rockwood.k12.mo.us
Coaches vs Cancer Liason	Jason Wolfard	Lindbergh	Jwolfard@lindberghschools.ws



Editor's Page

By Shane Matzen

Hard Court Herald Editor

Marquette High School

Short contribution this issue (as is the norm during this busy time of year for all of us)...Just a few thoughts as we head into the second half and the most exciting time of the season for our players and fans:

- 1) Congrats to all of our teams and coaches who were successful over the first part of the season and during the holiday tournaments just concluded. For those of us who maybe didn't win the trophy we coveted, we all know there was plenty to learn and hopefully build upon as we move forward. This part of the season is always intriguing to me to see if, and each season is different, we can build on what we've done well and keep that rate of success up OR not get down on ourselves on what went wrong and see if we can stay positive and improve. Regardless of your situation, best of luck in the endeavor that lies ahead of you and your club.
- 2) As you'll see in the photo included with this short article, our executive director David Fox and the folks at Collegiate Awards have done an OUTSTANDING job putting together the display that will represent our MBCA at the Missouri Sports Hall of Fame in Springfield. I have on my planner a trip down there in this spring to see the Hall for the first time and for those of you who have been before, this will be the motivation to get you back. David has set a target date of the MBCA Hall of Fame enshrinement for our new and fantastic display to be in place. Included in the display are obviously our enshrinees but also a tribute to our current state champions and to our association's founding father, the late Gary Filbert.
- 3) Lastly, and as we remind you each season at this time, please take the time to nominate a deserving player, manager and/or peer for recognition they so richly deserve. All of the necessary forms can always be found at our web-site (www.mobca.org) but also in this edition of the Hard Court Herald as well. It does not take a lot of effort on your part other than (in some cases) your membership fee and some paperwork.



Hope you enjoy this issue and the remainder of our 2011-2012 season!

**MISSOURI BASKETBALL COACHES ASSOCIATION
GARY FILBERT CLASSIC
JANUARY 21ST, 2012
MEXICO HIGH SCHOOL IN MEXICO, MO**

THE INAUGURAL GARY FILBERT CLASSIC WILL BE PLAYED AT MEXICO HIGH SCHOOL ON THE RECENTLY-RENAMED GARY FILBERT COURT.

GARY FILBERT WAS THE FOUNDER AND EXECUTIVE SECRETARY OF THE MISSOURI BASKETBALL COACHES ASSOCIATION. THIS ONE DAY EVENT WILL HONOR HIS LEGACY WITH THE MBCA.

PROCEEDS FROM THIS EVENT WILL GO TO THE AMERICAN CANCER SOCIETY & MISSOURI BASKETBALL COACHES ASSOCIATION.

MATCHUPS INCLUDE (TIMES TBD):



- 3:00 STURGEON VS. SCOTT COUNTY CENTRAL (BOYS)
- 4:45 ROCK BRIDGE VS. WHITFIELD (BOYS)
- 6:30 MEXICO VS. HARRISBURG (GIRLS)
- 8:15 MEXICO VS. SAVANNAH (BOYS)



*FOR MORE INFORMATION,
GO TO: MOBCA.ORG*



Storming...The Danger Zone

By Mark McLaughlin

Missouri Magic Director

Hard Court Herald Columnist

There are five stages of team development --- A team's success *depends* on its ability to navigate the different currents and eddies of that river.

- 1) **Forming** --- Day 1 of practice through the 1st game --- Practices tend to be good because everyone starts out positive. Everyone believes they have a chance to play or to contribute.
- 2) **Storming** --- From the *moment* the first depth chart is released and to the *moment* of the first setback for the team --- Some teams never get past this. The problems are outlined below.
- 3) **Norming** --- Norming is the time of the year, generally right now through the middle of January where teams settle into their roles, habits, and routines, and there's a general acceptance of those roles. Coaches and teams work to add new sets, special plays, drill on perfecting skills and techniques, and learn from mistakes from game to game.
- 4) **Performing**---Mistakes lessen, and really good teams start to come together, fight through adversities, finding ways to compete, and finding ways to win.
- 5) **Transforming** --- These are the stories we love to read about --- where kids go beyond just performing well, but assume a *transformative* level of performance. They do some spectacular things, win big games, score legendary comebacks, and log spectacular team and individual performances.

Let's go back to stage 2 --- the storming stage. Here are some phenomena coaches may face over the next four weeks:

- 1) **Junior syndrome** --- If players advance through elementary, middle school, freshman and JV programs, they can arrive at the junior year never having *not* started. There is the "sense" that something is wrong. If a player has never experienced the bench, being there is a hard adjustment. It may be the first time in the player's career that he has entered the "mix" of a varsity program of guys who are older and more experienced, or worse yet, younger and more talented.
- 2) **Expectations not matching the payoff** --- In "form" mode, everyone starts out on equal footing, but because only five guys can play at a time, the player who perceives himself a starter may come off the bench. The player who perceives himself a rotation player may play spots. And starters may *all* begin with the idea that they are stars. As games are played, and the coach establishes what he or she wants to see at game-time, players may be limited by their coach in ways that they feel restrains their freedom. Human nature suggests a tendency to blame guys getting more of a spotlight, and, if darker angels prevail, might lead to in-fighting, side-picking or factions within the team.
- 3) **Power struggle for control** --- New coaches in their first year in a program may face testing from strong-personality types, especially seniors. If they liked their previous coach, comparisons are inevitable, and the new guy may not match up to the comparisons. In reality, he or she is not better or worse, he or she is just different than what the players are used to and adjustment is required. Some coaches fight back and assert an "Alpha" dominance over the player, and some players resist, talk back, go off the reservation, or quit. There is often times a power struggle between players for leadership of the team --- For guys in their second, third or fourth years in a

program, the struggle faced here is one part competition, and may be the creature of clashing personalities between players. *Over time*, with success, patience, and control exerted over these clashes by the coach, players determine that behavior isn't acceptable and abandon it, or leave the team.

- 4) **Sunshine Patriots** --- Whether or not a team believes in their coach, when they're winning, you get the benefit of the doubt. But when you're not, resentments and anger flair up and the blame game begins. Kids can and will sometimes withhold effort if they don't see the value in fighting through it, or don't see the effort rewarded. In most instances anyway, a third of the team is for the coach, a third are against him, and the other third are waiting to see which way the wind blows. When it starts to go bad, first, they stop believing in the system, then they stop believing in their teammates, then they stop believing in themselves, and finally, stop believing in the coach...Pack your bags, and write three letters ... writing is on the wall.
- 5) **Younger better, older affronted** --- How coaches handle underclassmen and promoting them to the varsity, particularly ahead of older players is dicey at best, and requires real deft coaching and counseling of all involved. While most of us would tend to think that every team wants to win and everyone on the team wants to win, that attitude "holds" for some kids only as long as they're part of the group doing the winning. I never understood where the idea of "senior entitlement" came from, that once a player became a senior, he or she was guaranteed starting spots or featured positions within the team --- I believe this, more than any other problem faced here, comes from parents spouting off and becoming too involved --- It's Moms and Dads who first and foremost who expect their senior kids to play, but that attitude may not reflect that a younger player can help the team go further and win more games --- If not handled correctly, fighting and griping and undermining can begin --- My favorite was always just not passing the ball to a younger, talented player. That puts a large monkey on the back of the team --- The younger player senses he's not being accepted, hesitates when his instinct tells him to go make a play, and worries when he makes the smallest mistake. Kids can get ruined very easily if the coach has not laid the ground-work for this ahead of time.
- 6) **Outstanding older player, weak supporting cast** --- This is a product of small school rosters and issues --- Picture these scenarios:
 - **the great small-school kid** --- 6-5, 185, can drive, shoot deep and is better than anyone around. His teammates *let* him be the man but stand around and watch him do it. He becomes easy to double up, box, triangle, etc., because the other players expect him to just "do it". A basketball court is no place for a spectator, and a lot of good players become the "go-to guy" and don't learn how to get their teammates involved. A coach with a great talent may become so enamored of the young star that he doesn't *emphasize, emphasize, emphasize* the development of a basic level of competence by everyone else. The player tries to get his teammates involved, but they don't get to the right spots and can't make the plays --- it comes easy to *him* and he sometimes doesn't think about the fact it doesn't come easy to his teammates --- Frustration, and sometimes lost composure directed at teammates can result, and from that, bickering and infighting begin.
 - **The flying point guard**--- The outstanding point guard with great vision and an outstanding touch on his passes must feel like there's a special place in hell reserved just for him when he locates the open man, time after time, and makes the pass on a dime, right where it needs to be, and his teammates can't catch it, noses get broken, or worse yet, the ball hits them in the worst possible place...wait for it...the hands. If part of a player's portfolio is the ability to distribute and *deliver* the basketball gift-wrapped, and there's no one home, that can kill this kind of player --- A simple key here...he needs to *keep* making the pass and teammates have to be coached to *expect it*. A bad drop at an

inopportune moment by a teammate can lead to a melt-down by the most fiery guy on the court with bad results for your team.

- **Post man on an island** --- There is nothing worse than having a 6-8, 195 to 200-pound post player on the inside who *never* touches the basketball. A lot of big guys don't work hard enough in the post to catch it, but they don't work hard because the guards and wing guys never throw it to them, because ...in a circular argument that gets back to a problem of the last twenty five years --- guard-oriented coaching, a reliance on the three, and neglect of both the coaching of big guys, and of the guards on how to recognize an open big and get him the ball. I am *convinced* from as hard as I work on this that a big man can be wide open, jailing his defender behind him in the low box, and all the wing guy sees is a big "blob" on the post, not recognizing eyes, hands or numbers. Part of the coaching here is to stress to wings and guards to "zero in" on the big man's eyes and face, really dial in, and then make the pass. Animated wing defense can create issues on this, obviously, but coaching the wing player to create space, use pivots and footwork and ball-fakes to buy that space and then throw the ball to the post *where his defender isn't* represents the "keys to the kingdom".. In the defense of wings and points, the *really* good ones *will* make the pass, but only if they trust their big guy to catch it.

Dick DeVenizio was a great teacher on the use of head fakes, hand gestures and the "grimace" designed to *engage* the big guy visually, get him connected eyes to eyes and then make a play.

In each instance here, the common thread is *frustration* because of something that the player has the ability to do that teammates can't match, or in the case of the post guy, is doing what he needs to do to get in scoring position but his teammates don't recognize what *they* have to do to get him involved.

When you have frustration, you have harsh words. When you have harsh words, you have conflict, and when you have conflict that goes unresolved, you have resentment, then anger, then bitterness, or worse.

Coaches will often say, "you guys don't have to like each other, but you have to get along and respect each other." Without a *serious* assessment of what is happening to your players and between them, you may mistake sharp words for bickering, and miss the bigger picture ... you can improve your team if you can coach your players through and past their frustration, and fix in practice what's broke at game time...and everyone has a piece of that puzzle.

I believe that dysfunction, the "oxygen" of conflict, and how people deal with issues directly correlates to how a player's home works, how the school "culture" operates on a student and a staff level, and based on whether or not a team has traditionally won or lost.

I coached in a school with a lot of success in football, but basketball was seen as a secondary sport. In some cases, success in basketball seemed to become a *threat* to success in other sports. I don't buy into the idea that schools are "football schools" or "basketball schools" or that in any way that a school can only be good at one thing.

Harlan Community High in Iowa is known as "Championship High School" --- They've amassed multiple state championships in football, basketball, baseball and track, and major large group success in music, band, vocal, speech and drama, and an FFA group among the best in America.

Everything works there because everyone worked together --- Curt Bladt, the football coach, Mitch Osborn, the basketball coach, and Lee Nelson, the band director were *completely* in sync with one another --- They supported, rallied and encouraged each other, and because of great success, success was expected from the time kids went to school. It wasn't that they just expected people to win without working for it --- work ethic was simply an accepted, understood part of what I call a "happy warrior" culture.

When a school achieves this, it sticks for a long time.

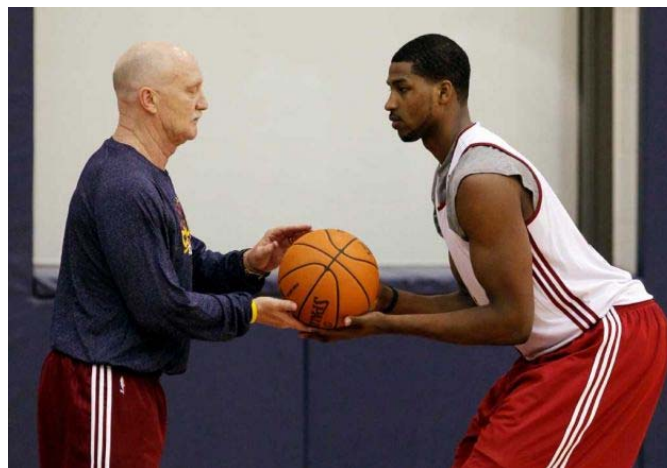
May I just add that Lee taught for more than 40-years in the same school, Coach Bladt has been head coach for 39 years and Coach Osborn for 13 years. Their staffs have changed little. Getting to the point where that's what is "just expected" happens rarely. Coach Cool did this at Newtown, Coach Fouch does it at LaPlata, Coach Scanlon at Rockbridge, and the coaches at Scott County Central do it as well.

It isn't just talent, or coaching continuity. It's being *attentive* to what's going on around you and being a *forceful* personality as a coach in getting beneath the surface of a dysfunction, "scratching where it itches" and counseling players through those rough patches to move them on to the next stage.

There's a reason there's so much coaching turnover in this state, and I believe the inability to get a team *beyond* this stage for one, two or three years is probably the "silent" "Nail in the coffin" that the press, and media, and others report as the "coach losing control of the team". There's a difference between a good X and O coach and a guy who couples that with the ability to counsel, and lead, and sometimes *parent* his kids into and through skill-sets that they've never developed, or away from negative skill-sets that get developed because of environment, culture or a climate of losing.

No matter how talented the team, the inability to fight through these stumbling blocks is bad, but the failure to recognize them for what they are is generally fatal. I've always believed as a coach that the *proper* relationship for me was to coach the team and encourage it, but it was the job of the players to lead it.

If I as a coach have to *do both*, we'll never achieve as much as we can as a team, and no matter our talent, will likely exit early at tournament time, and spend the next six months crying crocodile tears and wondering why.



Q&A With the Difference-Makers John Schnell-Legendary Retired Official

John Schnell is an icon in athletic circles in this state. After serving our country during World War II in the Navy, he attended and received degrees from Washington University in St. His teaching and coaching career took him to stops at Berkeley High and then to the new Parkway High in 1958 (now Parkway Central). At Parkway, he coached football and golf for over 25 years including a state title in golf in 1974. His service continued up until this year for the Parkway School District as a school coordinator when he retired after 54 years working for the district.

His officiating career began in 1960 and he quickly became one of the most respected in Missouri refereeing annals. He was a fixture at the Normandy Christmas Tournament in its heyday working the title game a dozen times (and is remembered as one of only two individuals who played, coached and officiated at this event). Included in his officiating resume were 12 district title games and seven appearances in the MSHSAA State semi-finals and finals held at these venues: Northeast Missouri State's Pershing Auditorium (now Truman State), Washington University Fieldhouse and Mizzou's Hearnes Center.

After retiring from officiating, John has been the renowned Executive Secretary of the St Louis Suburban Public High School Athletic Conference (a total of 32 schools). Each year he assigned officials for all varsity and sub-varsity events for both boys and girls in football, swimming, basketball and volleyball. An incredible 8000+ assignments PER YEAR were handled and created by John's skillful organization and handiwork. It truly has been a blessing for not only St Louis-area schools to have John Schnell as an advocate but our state as well. This Q & A is the MBCA's way of saying "THANKS" for a truly wonderful career serving our athletes and coaches.

Hard Court Herald: *What is/are one/some of your greatest memories as a basketball official?*

John Schnell: The great relationships I developed with players, coaches and my fellow officials on the court. When you work a really tough game with a fellow official, you get to know him pretty good. I worked the Championship Game at the great Normandy Christmas Tournament which hosted 32 teams from all over the State approximately for 12 years. I also have great memories of working the State Finals at three different sites: Washington University, Kirksville University and at Columbia at the Hearnes Center.



HCH: *You've been a high school head coach, an assistant coach and an official. What do you think are the most important things to remember as both a coach and official when it comes to communicating with each other during games?*

JS: If you are a coach or an official, the greatest communication asset is treating each of them as an equal – respect each other's point of view, and then work for a solution to the situation. It never helps to berate an individual and be demonstrative, whereby both of you look bad.

HCH: *Over 60 years involved in high school sports, in your opinion, what are some of the most noticeable changes that have occurred in that time and what are some of the things that seem to never change?*

JS: Asking athletes to work out around the year on one sport. It seems to me they have taken the fun out of playing 2 or 3 sports if they have the talent. We still tend to blame officials for losses. I always told my players the only way officials can cost a game is if the coaches and players play the game and do not make a single mistake. It will never happen!

HCH: *What do you feel are the most important characteristics for an official to have and why?*

JS: Have a pleasant and cooperative demeanor, and yet be strict enough to control the players and coaches. Even more important, be able to communicate at a high level with coaches, players and fellow officials. Any problem can be solved if you can communicate your rules and ideas with them.

HCH: *Who was the best basketball high school basketball official that you ever worked with and why?*

JS: Hard to narrow to only a few officials. However, I would say Bob Schapp, Ray Sonnenberg, Ray Cliff and Gabby Haenseler. They all embodied all the items in #4. They had a great mental approach to working the game. They all had great knowledge of the rules, and how to use good judgment in applying them to every situation. They all controlled the game, and yet were level headed and cooperative at the same time. I always knew they would support me and back me up if I needed them. They also knew I would be there for them if need be.

HCH: *On the other side of the coin, who are some of the best coaches you have worked with (coaching with/against or officiating their games)?*

JS: Great Coaches I have worked for: Tom Stanton - Beaumont High School, D.C. Wilcott at C.B.C. High School, Denver Miller at Kirkwood High School and Jody Bailey at St. Louis Public High School.

HCH: *What kept you motivated to stay so heavily involved in high school sports for over 60 years?*

JS: Playing for Arnold Von Lehston at Soldan High School 1939-1943, I respected him so much, I knew I wanted to become a High School Coach. Coaching, teaching and officiating were and are what I wanted to be my life's work. It was a great feeling to work with young men and see them develop into successful well rounded citizens of their community. The great interaction between coaches, officials and players leave you with memories you never forget. Working as the Executive Secretary for the St. Louis Suburban Public High School Athletic conference the past 35 years and assigning official for football, basketball, volleyball and swimming has kept me involved in Athletics with all the Athletic Directors for the member high schools.

Longtime coach Steve Boeh dies in car accident

April M. Fronick

Special to MoSports.com

Former Bowling Green Coach Steve Boeh Dies In Car Accident

Reprinted with permission from the People's Tribune (<http://thepeopletribune.com>)

Steve Boeh, former coach of the Bowling Green varsity boys basketball team, died in an automobile accident on Monday afternoon while driving near his home in Cuba.

The Cuba Police Department said a full report was not complete at publication of this edition. Funeral arrangements are pending at Mizell Funeral Home in Cuba. Steve is survived by his wife, Marilyn, and children, Chris, Stephanie and Nate. Information about services for Coach Boeh will be posted on the Trib's website when they become available.



Coach Boeh served as a teacher and a coach for 38 years, retiring in the spring following the 2010-2011 school year. He spent a handful of years with the Bowling Green R-I School District and was well-respected throughout the community.

"You'd be hard-pressed to find someone with something negative to say about him. He was a great coach and a great teacher and an even better man," remarked R-I Superintendent Darin Powell.

Powell signed on with the R-I District shortly after Boeh. Powell said that decision had much to do with the respect he had for Boeh. They had worked together at the Hannibal School District.

Powell said there was not a dry eye when he informed the high school staff of Boeh's death yesterday.

Many area coaches shared their respect and admiration of Coach Boeh following his retirement last year. Coach Bobby Spoonster noted that he learned a great deal from Boeh. Coach Greg Williams pointed out that he had big shoes to fill taking over the varsity program this season.

TribCast Director Mark Fronick noted that he learned more about the game from Boeh than he did playing.

"That first game at Bowling Green is going to be tough," Fronick pointed out. Even those who coached against him were inspired by him.

"That was tough news to hear," said Elsberry Coach Ryan Parker. "We dedicated our practice tonight to him."

Boeh coached his final Bobcats basketball game on Feb. 28, 2011. Following the game, he shared his thoughts about nearly four decades of basketball on TribCast.

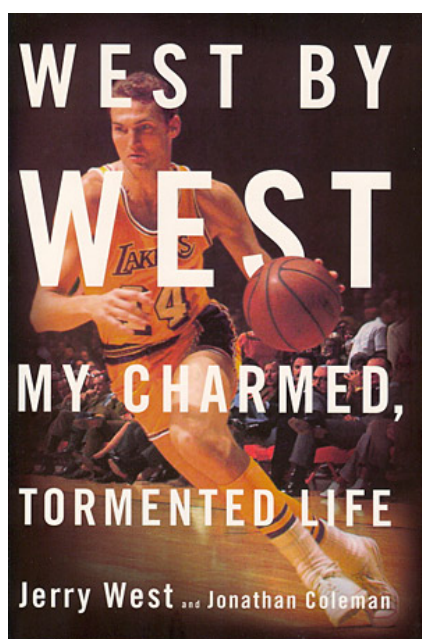
"I've been in it a long time. Very few coaches are lucky enough to be in it for 38 years. I'm pretty blessed," Boeh remarked. "I was lucky. I got thrown into it and I learned by trial and error."

Coach Boeh finished the last school year by leading the Bobcats golf team and was a fixture in the press box at Bowling Green football games and always near area coaches offering strategy and wisdom.



SUGGESTED READING

“West by West: My Charmed, Tormented Life” by Jerry West and Jonathan Coleman



(review by amazon.com)

He is one of basketball's towering figures: "Mr. Clutch," who mesmerized his opponents and fans. Jerry West was the coach who began the Lakers' resurgence in the 1970s, the general manager who helped bring "Showtime" to Los Angeles and created a championship-winning force that continues to this day.

Now, for the first time, the legendary Jerry West tells his story—from his tough childhood in West Virginia, to his unbelievable college success at West Virginia University, his 40-year career with the Los Angeles Lakers, and his relationships with NBA legends like Bill Russell, Wilt Chamberlain, Kareem Abdul-Jabbar, Magic Johnson, Shaquille O'Neal, and Kobe Bryant. Unsparing in its self-assessment and honesty, WEST BY WEST is far more than a sports memoir: it is a profound confession and a magnificent inspiration.

SUGGESTED WEB BOOKMARK

www.coachmeyer.com

The official home page of legendary college basketball Coach Don Meyer

For so many of us who have had the good fortune to hear him speak at a clinic but could never soak up the information he could give us in a short hour or two given, this site represents a look at the incredible body of work put in by Coach Meyer. The famous "handouts" that he has available at clinics is also linked to. A must stop on the web for all coaches!

DRILL OF THE DAY

40 Point Game

The offense gets one passing point for every pass they make within the offense. If they get out of the offensive pattern, the passes do not count until they get back in offense.

The passing points are converted to game points only if the offense scores that possession. Give 2 points for an offensive rebound to encourage the effort.

If the defense steals the ball, or causes a turnover, and gains possession they also steal the offenses passing points. (Team A makes 5 passes then team B steal the ball, team B gain possession with 5 passing points)

Play to 40 points or put 10 minutes on the clock. This drill will improve your passing, strength with the ball and shot selection. As the game gets closer to 40, each pass is more and more important (as in the end of a game).

*You can also use as a great defensive drill since they know if they steal the ball they steal the passing points. Defensively, the closer the score gets to 40 - the more crucial it is to get a steal.



TO: MBCA Membership

FR: MBCA All-District/All-State Selection Committee

RE: Making Clear the Process

As this exciting season of hoops reaches the stretch run, the MBCA Board would like to remind you to do your part in the All-State Selection process. In an effort to get more coaches involved in the Missouri Basketball Coaches Association and to do a better job of promoting our student-athletes, the MBCA revamped the All-State Selection process for the 2007 MBCA All-State Teams. We feel that the changes implemented in 2007 were beneficial to the process and each year we will look for ways to improve the All-State Selection Process. We need your help to make sure the 2012 All-State Selection Process is a successful endeavor.

Attached to this letter is a detailed outline of how the selection process starts at the district level. Each district in the state, boys and girls, need to select an All-District Team with a maximum of ten players at the conclusion of their District Tournament. We would hope that a coach in each district, boys and girls, would volunteer to be the site selection chairperson. This person would be responsible for collecting all the information and forwarding this information to the All-State Chairman. Also included in this letter are the forms necessary for the selection process. If you would like to volunteer in the process feel free to contact your regional representative to volunteer. Information for finding your region and your representative is on the following page.

Also we would like to remind all coaches that forms are also available to nominate players for MBCA Academic All-State. The requirements for MBCA Academic All-State are posted on the MBCA website: <http://www.mobca.org>. You can also receive these forms via e-mail: info@mobca.org.

Academic All-State forms need to be mailed to:

Missouri Basketball Coaches Association

c/o Shawn Erickson

942 North 6th Street

Festus, MO 63028

Please feel free to contact either of us with suggestions that we may further improve the MBCA All-State Selection Process. Good luck the rest of the season.

Sincerely,

MBCA All-State/Academic All-State Co-Chairman

Shawn Erickson

Jim Vaughan

MBCA

Head Boy's Basketball Coach, Kennett High School

info@mobca.org

jimvon9@hotmail.com



MBCA ALL-DISTRICT SELECTION PROCESS

SELECTION PROCESS AT THE DISTRICT LEVEL

(PRE DISTRICT TOURNAMENT SEED MEETING)

- In coordination with each region representative, each district site needs to select a site coordinator. This person will coordinate the voting process at the district level.
- If a district overlaps two regions, it is the responsibility of both region representatives to coordinate with each other to find a site selection chair.
- Shawn Erickson, MBCA All-State Chairman, will e-mail each coach on the membership roster with the All-District Packet. Each region representative is responsible for making sure the site selection chairperson has the district packet and understands the selection process.
- Site coordinators need to be in place by December 15th, 2011

ALL DISTRICT SELECTION PROCESS

- One week prior to the district seed meeting, the site selection chairperson needs to contact each coach in the district and make sure that they have the All-District information packet. Also they need to remind the coaches to bring names and stats of the players they plan to nominate for the All-District Team at the District Seed Meeting.
- At the district seed meeting, coaches from each school will nominate players for the All-District Team. The site coordinator will be responsible for compiling a list of names with statistics for the players nominated for the All-District Team. **REMINDER: THIS IS NOT AN ALL TOURNAMENT TEAM!**
- At the conclusion of the District Tournament, the site coordinator will give each coach a ballot with player statistics so all the coaches can submit votes to the site coordinator.
- The district can select up to ten players for the All-District Team. The voting process should be based on a (10-9-8-7-6-5-4-3-2-1) Scale. Coaches may not vote for players from their own team.
- Once the votes have been tabulated, the site coordinator will fill out the Microsoft Excel All-District Spreadsheet (spreadsheet can be found at www.mobca.org). Players should be entered into the Spreadsheet in descending order with the #1 player at the top of the sheet. This will help the All-State Committee in the All-State Selection Process. Site coordinators need to make sure all pertinent stats are included in the Excel Spreadsheet.
- Each District, at their discretion, may select a District Coach of the Year and include that information on the Excel Spreadsheet.
- The Microsoft Excel Spreadsheet needs to be e-mailed to Shawn Erickson at: info@mobca.org
- This spreadsheet needs to be e-mailed no later than the Wednesday before your class' Final 4.
- Region representatives need to stay in contact with their site coordinators to make sure all the steps in the process take place.
- It is the site coordinators discretion as to when the All-District Team will be released to the local media. Most coordinators in the past, released the team after the District Tournament.

ALL-STATE SELECTION PROCESS

- By December 1st, 2011, all Region Representatives need to select a coach from each classification to serve on the All-State Committee. Once these coaches have been selected, send their names to Shawn Erickson, All-State Chairman. If any changes need to be made to the committee, please inform Shawn Erickson as soon as possible. This will help us to get the right names on the passes provided to us by MSHSAA.
- The All-State Committee contact information will then be passed on to the membership after the District Tournament. This will allow coaches on the All-State Committee to receive information on potential All-State players, so that they can make the most informed decisions possible.
- The All-State Committee will meet at an undisclosed location at approximately 9:00 or 10:00 AM on the Saturday of the Final Four.
- Each committee will select twenty players for the All-State Team.
- Once all names and spellings have been verified, all All-State Teams will be released to the media on the Wednesday following the conclusion of the Class 1-3 Final 4.

MBCA REGIONAL BREAKDOWN

ST. LOUIS-- St. Louis City, St. Louis, St. Charles

NORTHWEST- counties of Andrew, Atchison, Buchanan, Caldwell, Carroll, Clinton, Daviess, DeKalb, Gentry, Grundy, Harrison, Holt, Livingston, Mercer, Nodaway, Ray, & Worth

KANSAS CITY-- City of Kansas City, Clay, Jackson, Platte

SOUTH CENTRAL-- Camden, Crawford, Dent, Franklin, Gasconade, Maries, Osage, Phelps, Pulaski

NORTHEAST- Adair, Audrain, Boone, Callaway, Chariton, Clark, Howard, Knox, Lewis, Lincoln, Linn, Macon, Marion, Monroe, Montgomery, Pike, Putnam, Ralls, Randolph, Schuyler, Scotland, Shelby, Sullivan, & Warren

SOUTHWEST-- Barry, Barton, Cedar, Christian, Dade, Dallas, Douglas, Greene, Howell, Jasper, Laclede, Lawrence, McDonald, Newton, Oregon, Ozark, Polk, Stone, Taney, Texas, Vernon, Webster, Wright

SOUTHEAST-- Bollinger, Butler, Cape Girardeau, Carter, Dunklin, Iron, Jefferson, Madison, Mississippi, New Madrid, Pemiscot, Perry, Reynolds, Ripley, St. Francois, Ste. Genevieve, Scott, Shannon, Stoddard, Washington, Wayne

CENTRAL-- Bates, Benton, Cass, Cole, Cooper, Henry, Hickory, Johnson, Lafayette, Miller, Moniteau, Morgan, Pettis, St. Clair, Saline

The “Meat and Potatoes” Section

You joined the MBCA for several reasons. Hopefully one of which was to be able to access the January and April issues of The Hard Court Herald (available only to members). But the true reason we all coach and belong to this organization is to do for others (peers and players). The remainder of this newsletter includes all the necessary forms you will need to nominate those that have contributed to the game.

Whether you have a player who has been a star on the court and/or been a great citizen and student, an assistant coach who has meant a great deal to you and your community, a coach you respect who deserves to be a candidate for Coach of the Year or in the Missouri Basketball Hall of Fame....well, the avenue to recognize them is on the following pages.

Please take the time to peruse the forms included here and pay a tribute to a player or coach who deserves to be recognized. Also, just after this page is a letter from our newly-named “MBCA All-State Committee” which has put out specific guidelines for the process to go through to nominate and select our MBCA All-State Team. In this process, we will also be naming All-District teams. Forms will have different due dates to be turned in and some awards will require you to be a member to nominate and some will not. **Membership fees go up as of February 1st. Individual fees will be \$30 and school staff fees will rise to \$85.** Please pay particular attention to those details (as well as a new mailing address this year to mail your nomination forms to) when selecting which categories you choose to print, fill out and send in. The awards and forms to follow include:

Mr. & Miss Show-Me Basketball

MBCA All-State & All-District

Academic All-State

Richard Fairchild Coach of the Year

MBCA Hall of Fame

Kevin “Cub” Martin Assistant Coach of the Year

Curtis Kerr Student-Assistant/Manager of the Year

MBCA Membership Form



Nomination form
Mr. and/or Miss Show-Me Basketball
Sponsored by the Missouri Basketball Coaches Association
(current school year SENIORS only)

Player Name: _____

School: _____

School Phone: _____

Player's Home Phone: _____

Coach's Name: _____

Coach's

Phone: _____

School

home

cell

Height: _____

Weight: _____

Averages:

Points: _____

Rebounds: _____

Assists: _____

FG%: _____

FTA: _____

FTM: _____

FT%: _____

Honors

Received: _____

Coach's

comments: _____

Coach's Signature: _____

There will be 10 girls and 10 boys selected as finalists from the nominations submitted. Mr. and Miss Show-Me Basketball will be chosen from those finalists. The names of finalists will be published in the Hard Court Herald and at mobca.org. Mail all nominations to:

Shawn Erickson, MBCA Office
942 North 6th St
Festus, MO 63028

Return this form by March 1, 2012. YOU MUST BE A MEMBER TO SUBMIT A NOMINATION.

Nomination form
Richard Fairchild Coach of the Year
Sponsored by the Missouri Basketball Coaches Association

Nominated Coach's Name: _____

School: _____

School Classification (circle one): 1 2 3 4 5

(circle one): boys girls

Nominating Coach's Name: _____

You must coach in the SAME classification as the individual you are nominating!

Nominating Coach's School: _____

Reason for
Nomination: _____

Mail all nominations by March 10, 2012 to:

Shawn Erickson, MBCA Office
942 North 6th St
Festus, MO 63028

You MUST be an MBCA member to nominate!!!

Nomination form
Missouri Basketball Hall of Fame
Sponsored by the Missouri Basketball Coaches Association

Coach's Name: _____

School(s) coached at and record at each school:

Nominated Coach's

Phone: _____
School **home** **cell**

Nominating Coach's Name: _____

Nominating Coach's Phone: _____
School **home** **cell**

Career Honors

Received: _____

Nominating Coach's

comments: _____

Nominating Coach's Signature: _____

Coaches with 500 or more wins in Missouri are automatic qualifiers. Please mail form or seek more information by contacting Kevin Walsh, Hall of Fame Coordinator, at the following address:

Kevin Walsh
Vianney High School
1311 South Kirkwood Road
Kirkwood, MO 63122

Return this form by March 10, 2012. YOU MUST BE A MEMBER TO SUBMIT A NOMINATION.

KEVIN "CUB" MARTIN MEMORIAL

MISSOURI ASSISTANT BASKETBALL COACH OF THE YEAR

This award is being awarded in honor of the late Kevin "Cub" Martin, the long-time assistant basketball coach at Nixa High School. A lifetime resident of Nixa, Kevin's committed loyalty to his students, players, family and friends was always proudly displayed and never questioned. He was a source of inspiration to all he came in contact with. His legacy is one that will now live on in honoring those who give of their time to basketball in our state in a manner befitting Kevin's life and career.

CRITERIA

Outstanding Character

Loyalty

Commitment to Program and Community

Sportsmanship

Ethics

Selflessness

Leadership

Longevity at a School/Program

NOMINATION REQUIREMENTS/PROCESS

Nominating coach must be a member of the MBCA

Applicants will be sorted and honorees selected by the MBCA board

Fill out the space below with appropriate information and return by March 10, 2012 to:

Shawn Erickson, MBCA Office

942 North 6th St

Festus, MO 63028

Assistant Coach

Nominated: _____

School Affiliation: _____

Years at School: _____

MBCA Member

Nominating: _____

****In addition to this form, please submit a letter of recommendation including:

1) career overview of nominee

2) reason for nomination

CURTIS KERR MEMORIAL

MISSOURI HIGH SCHOOL BASKETBALL STUDENT-ASSISTANT OF THE YEAR

This award is being presented in honor of the late Curtis Kerr, a four-year basketball manager during his time at Elsberry High School. Though Curtis lost his life at a very early age soon after graduating from EHS, his dedication and devotion to the Indian basketball program will and should never be forgotten. This award will not only carry on Curtis' legacy but give just due to those hard-working young men and women who do all the previously-unsung work that makes a high school basketball program go.

The winner of this award will be honored at the annual MBCA Academic All-State Banquet in April and all nominees will be listed in the May Edition of the MBCA newsletter ("The Hard Court Herald").

CRITERIA

- 1) Outstanding Character*
- 2) Devotion to Academics
- 3) Loyalty
- 4) Commitment to Program (must have served as a manager for your program for at least three seasons)
- 5) Outstanding Work-Ethic

NOMINATION REQUIREMENTS/PROCESS

Nominating coach must be a member of the MBCA
Applicants will be sorted and honorees selected by the MBCA board

Fill out the space below with appropriate information and return to:

Shawn Erickson, MBCA Office
942 North 6th St
Festus, MO 63028

Nominee's Name: _____

High School: _____

Years as a Student Assistant: _____

MBCA Member Nominating: _____

MBCA Member Contact Info: _____
Phone e-mail address

***In addition to this form, please submit a letter of recommendation from nominating coach.
PLEASE SUBMIT THIS FORM AND LETTER BY FEBRUARY 1, 2012!**



2011-2012 MEMBERSHIP APPLICATION

Please fill out and return \$25 per single membership (Take note of "All-School" rate and late fees below).

Make your check payable to:

"Missouri Basketball Coaches Association"

NAME: _____

HOME ADDRESS: _____

CITY/STATE/ZIP: _____

HOME PHONE: _____ E-MAIL: _____

SCHOOL AFFILIATION: _____

CLASS: 1___ 2___ 3___ 4___ 5___

JR HI___ HS___ JUCO___ COLLEGE___ OTHER___

REGION: NW___ NE___ SE___ SW___

South Cent___ Cent___ KC___ STL___

Total Wins as Head Coach _____

Number of years coaching at each level:

COLLEGE: ASST___ HEAD COACH___ TOTAL___

HIGH SCHOOL: JR HI___ HS ASST___ VAR___ TOTAL___

MAIL TO:

MBCA, c/o Shawn Erickson
942 North 6th St
Festus, MO 63028

(Please note: single Membership is \$25 per year)

*****SPECIAL "ALL-SCHOOL MEMBERSHIP"*****

INDIVIDUAL Schools may enroll ALL of their coaches (boys AND girls) for a school membership fee of only \$70. Each coach on the staff though will have to fill out an individual membership form along with the check for \$70. After February 1, 2012, the prices will go up to \$30 per individual and \$85 for the entire school staff.

I would like to become more involved in the MBCA and its activities. Please check out the info below for more information on how you can contribute:

MBCA web address: www.mobca.org

Shawn Erickson: mbca.allstate@gmail.com

Suggestions for the MBCA Board to consider:
